

GOOD TO KNOW

If you are interested in exploring membership at PCCH, please contact Craig Barnes at the church office or at cbarnes@chestnuthillpres.org.

Sunday worship is live-streamed at chestnuthillpres.org/live and is recorded for later viewing. This offering extends our reach across the country and beyond. Visit us when you're away and tell your friends about this new opportunity to join us.

Please share any pastoral care needs or concerns with Russell Sullivan at the church office or at rsullivan@chestnuthillpres.org.

Please see the back cover for information about our church staff and how to contact and connect with us. You also can access today's Bulletin online.

The Presbyterian Church of Chestnut Hill has committed itself to be a Matthew 25 congregation, joining an initiative of the Presbyterian Church (U.S.A.) focused on three areas:



Building congregational vitality, dismantling structural racism, eradicating systemic poverty.

Visit our Matthew 25 page: chestnuthillpres.org/matthew-25 for more information about Matthew 25 news and events.

PCCH NEW MEMBER CLASS

Saturday, February 24, 10 a.m.-12 p.m.

If you are a regular visitor, thank you for worshipping with PCCH. We would love for you to take the next step in your relationship with us, which means becoming a member of the congregation. This is an exciting time for our congregation and a great time to become a part of our life and ministry. We will be hosting a New Members class in the Harris room on the lower level of the church. All of those applying for membership are asked to attend this meeting even if joining us from another Presbyterian congregation. During this class we will get to know you better and you will have the opportunity to become better informed about our church. Some of our elders will also attend this class—at its end there will be a vote to accept new members. New members will be presented to the congregation in worship on Sunday, February 25. Please contact Evelyn Carpenter in the church office if you would like to attend this class, 215-247-8855.

THE LIFE OF THE CHURCH

UPCOMING EVENTS AT PCCH

GERMANTOWN AVENUE CRISIS MINISTRY FOOD DONATIONS

First Sunday of the month food collection is next Sunday, February 4.

GACM provides food, fuel, clothing, housing and other emergency assistance to those who live in the Northwest section of Philadelphia. We collect food and cash donations for the GACM Food Cupboard on the first Sunday of every month. Please help with your donations of canned tuna and chicken, rice, pasta, peanut butter, canned vegetables and beans, hearty soups and stews, and breakfast cereals. Regular sized products, not family size, and packaged in non-glass containers are appreciated.

PCCH WEDNESDAY BIBLE STUDY

We meet on Wednesdays at 10:30 a.m. in the Harris room. This Wednesday Dr. Craig Barnes will be leading the discussion which will focus on the biblical text used for the upcoming Sunday sermon. The reading for January 31 is Philippians 4:4-7. All are welcome.

Summer's coming soon!

PCCH Vacation Bible School

we're BZZZZY making plans for a super fun time!

Camp Firelight

A SUMMER CAMP

ADVENTURE WITH GOD

Psalm 56:3

Monday-Friday
August 12-16
mornings 9 to noon
ages 3* to grade 5
\$150**

scan for more info or to register NOW!

*must be potty-trained
**limited scholarships available

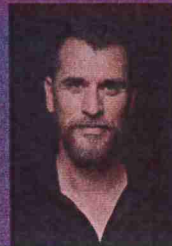
Variant 6

presents:

Haute Voix

Music from the 17th and 18th
centuries for two sopranos

Featuring Jessica Beebe and Rebecca Myers, sopranos; Sarah
Cunningham, viola da gamba; and Leon Schelhase, harpsichord

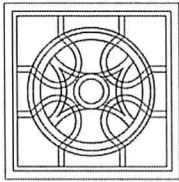


Saturday, February 3, 7:30 p.m. in the Sanctuary, Admission \$10

In this program the founding member sopranos of Variant 6—Jessica Beebe and Rebecca Myers—will explore the boundless possibilities of two both distinct and complementary soprano voices. Internationally acclaimed Philadelphia artists Leon Schelhase and Sarah Cunningham join them on harpsichord and viola da gamba for this luscious program of music by Purcell, Couperin, and Carissimi in themes of love, loss, faith, and philosophy.

Forum on the Hill

Presented to a limited number of people in-person at 12:30pm then recorded and posted online starting at 5pm. www.chestnuthillpres.org/education/forum-on-the-hill/



FEBRUARY 8

REBECCA YAMIN

DIGGING IN THE CITY OF BROTHERLY LOVE

STORIES FROM PHILADELPHIA ARCHAEOLOGY

Historic Philadelphia has long yielded archaeological treasures from its past. Excavations required by the National Historic Preservation Act have recovered pottery shards, pots, plates, coins, bones, and other artifacts relating to early life in the city. Rebecca will be here to discuss her book, *Digging in the City of Brotherly Love* and about how we continue to use archaeology to learn about and understand people from the past. She will talk about several major discoveries from recent finds including unmarked early eighteenth-century burial grounds, one of which associated with the first African Methodist Episcopal (AME) Church, in the oldest part of the city; a nineteenth-century working-class neighborhood built along the path of what is now Route I-95 and was once home to Native American life; and the remains of two taverns found on the site of the current Museum of the American Revolution. She will also discuss the research and state-of-the-art techniques used to study these exciting discoveries.

Rebecca Yamin is a historical archaeologist specializing in urban archaeology and the former director of the Philadelphia branch office of John Milner Associates, Inc., a company that specialized in historic preservation and cultural resource management. She is the author of Archaeology at the Site of the Museum of the American Revolution (Temple), which won the 2022 James Deetz Book Prize given by the Society for Historical Archaeology, and Rediscovering Raritan Landing: An Adventure in New Jersey Archaeology.

PRESBYTERIAN CHURCH OF CHESTNUT HILL

8855 GERMANTOWN AVE, PHILADELPHIA PA 19118

Registration Required for in-person attendance.

Contact 215-247-4654 or email msaavedra@chestnuthillpres.org

<https://www.chestnuthillpres.org/education/forum-on-the-hill/>

Visit our website above to watch the recorded version after 5pm.

CHILDREN, YOUTH & FAMILIES

SUNDAY SCHOOL UPDATE

Date	Godly Play PreK-2nd Grade	Christian Studies Grades 3-5	Feasting on the Word Grades 6-8
1/21	Michelle Shachtman and Linnea Johnson	Dom Rebeck	Brandon Harris

Classes will be offered for three different age groups:

- Children ages 3 to 2nd grade will engage in faith formation through Godly Play curriculum.
- Children in grades 3-5 will increase their Bible literacy while learning about the richness of our Christian history and faith in a fun, structured setting. We will be using the Memoria Press Christian Studies curriculum.
- Middle schoolers in grades 6-8 will wrestle with deep faith questions in classes on alternating weeks. On the other weeks, they will attend worship with their families.

Most Sundays, we will begin Sunday School with a brief opening in the chapel. On Sundays when Communion is served in worship, the children will return to sit with their families so that they can participate.

CHILDREN'S AND YOUTH MUSIC UPDATE

Joyful Noise and Youth Choir will rehearse as usual today, Sunday, January 28.

Beginning next Sunday, February 4 Youth Choir will rehearse on Sundays from 11:40 a.m. until 12:30 p.m. in the Strouse building. Joyful Noise will continue to rehearse at their normal time.

A reminder that all children are welcome to sing with Joyful Noise and Youth Choir—drop-ins are welcome!

YOUTH UPDATE

Mark your calendars for Quizzo trivia night at PCCH on Saturday, February 10 at 7 p.m. (kids over 12 invited) and SOUPerbowl Sunday with the youth group making and selling delicious chili on Sunday, February 11 after worship in Widener Hall. Proceeds will benefit the youth mission trip to Montana this summer 2024.



PCCH QUIZZO

Trivia Night

So you're a sports nut?
Bible expert?
Taylor Swift Connoisseur?
All skills sets will be put to the test!

Saturday 7 Pm | 10 | February 2024

Bring your friends and family for a night of fun and laughter.
Appetizers and soda will be provided. BYOB

TICKETS \$15

Teams will be made up of 5-7 people. You can form a team beforehand, or show up and join one!

CENTER ON THE HILL

The Center on the Hill is open Monday-Fridays, 9 a.m.-4 p.m. with all our practices and protocols in place (sanitation, social distancing, and UV air filters). New online content, such as virtual tours, fitness videos, art lessons, recorded presentations and more, is posted Monday-Thursday at 12 p.m. on our programs page here:

www.chestnuthillpres.org/center-on-the-hill/programs

Registration is required for all activities and classes at the Center, as space is limited for social distancing. Call 215-247-4654 or email msaavedra@chestnuthillpres.org.

CHAIR CARDIO *(registration required)*

Thursdays, January 23-February 14, 1-2 p.m., \$10

Dance, stretch, move, and groove with Megan Do Nascimento for an all-levels chair cardio class where we will use light weights and a fun playlist to get our heart rate and energy levels up. Be prepared to laugh and have fun. Megan is a breast cancer survivor and a yoga and fitness instructor known for her outgoing personality and inclusive teaching style.

GRIEF SUPPORT GROUP *(registration required)*

Mondays, January 22 & 29, February 12 & 26, March 4 & 11, 1-2:30 p.m., free

Group is closed to new members after January 29

We acknowledge the value of sharing time and stories with others who have also experienced a loss. Please join us for six informal gatherings as you grieve the loss of a loved one. Topics covered: myths of grieving, grieving and holidays, does grief ever end and

others. Our facilitator is David Stevenson, MDiv., CT. He is a bereavement counselor at Crossroads Hospice & Palliative Care.

LEARN TO PLAY RUMMY TILES (AKA RUMMIKUB) *(registration required)*

Wednesday, January 3, 10:30 a.m.-12:30 p.m., free

Rummy Tiles is one of the world's best-selling and most-played games. Players take turns placing numbered tiles in runs or groups, Rummy style. The first player to use all of their tiles wins. Fast-paced, easy gameplay for two to four players, combining elements of the card game rummy and mahjong. Come learn to play and then return on Wednesdays for open play.

QIGONG (HEALING MOVEMENTS) (*registration required*)

Mondays, 2-3 p.m. (ongoing), Thursdays, 9-10 a.m. (ongoing)

\$40 per four classes; \$12 walk-ins per class

Come and experience the gentle, healing movements of the ancient Chinese art of Qigong (chee - gung). It is the practice of moving Chi, life energy, through the body for good health and well-being. These easy movements can be done in a standing or seated position. Enjoy the peaceful, calming feelings brought about by this wonderful art. Michael McCormack has taught the healing arts for over twenty years. All are welcome.

HAPPENING HERE THIS WEEK

SUNDAY, January 28

Worship

Church school

Joyful Noise rehearsal

Fellowship

Youth Choir rehearsal

Youth Group

sanctuary, 10 a.m.

Strouse, 10:20 a.m.

Strouse 11:10 a.m.

Widener Hall, 11:15 a.m.

Strouse, 4:15 p.m.

Strouse, 5:00 p.m.

MONDAY, January 29

Sketching and watercolor class

Tai Chi Private Group

Italian conversation class

Table games open play

Grief support group

Qigong group

PNC committee meeting

room 1&2, 9:30 a.m.

room 3&4, 10 am

Harris, 11 a.m.

room 5, 12 p.m.

reception room, 1 p.m.

Harris, 2 p.m.

Harris 7 p.m.

TUESDAY, January 30

Mindfulness class

Sketching and watercolor class

Intro to Excel class

Mah Jongg open play

Tai Chi for arthritis and falls prevention

Strong Bones class

room 4, 9:30 a.m.

room 1&2, 9:30 a.m.

Harris, 10 a.m.

room 5, 12:30 p.m.

room 3&4, 1 p.m.

Widener Hall, 1 p.m.

WEDNESDAY, January 31

Beginning Tai Chi class

PCCH Bible Study group

Learn to Play Rummy Tiles

Widener Hall, 10 a.m.

Harris, 10:30 a.m.

room 5, 10:30 a.m.